

SIDELINES[®]
by REV-A-SHELF

2024 Closet
Accessory Products



NEW Matte Black
Products Available!




Richelieu



Deluxe
(Swivel)



Elite
(Rotating)

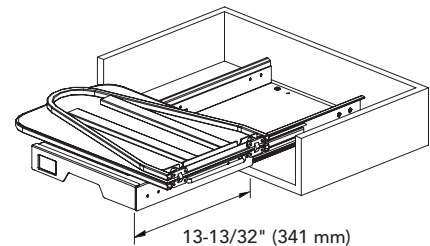


Premier
(Pop-Up)

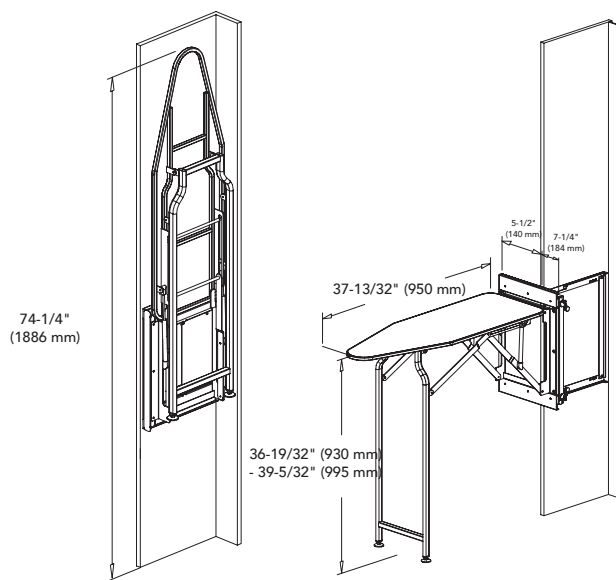
Soft-Close Ironing Boards w/ Over Travel

- Fits any partition at least 14" deep
- Deluxe and Premier models require a 10" wide opening
- (3) functional designs
 - Rotating
 - Swivel
 - Pop-Up
- Universal, non-handed
- Adjustable feet on Deluxe and Premier models
- Locks in place for stability
- Steel mounting frame
- Tan canvas, 100% cotton cover (included), Black canvas also available for Elite model

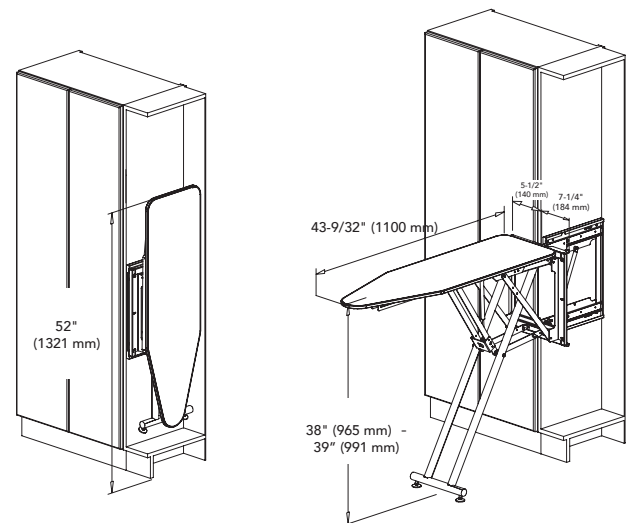
Elite (Rotating)



Deluxe (Swivel)



Premier (Pop-Up)



Soft-Close Ironing Board w/ Over-Travel

PRODUCT	DESCRIPTION	DIMS	FINISH
CROIBSL14SM1	Elite Rotating Ironing Board	18-11/16" (475 mm) W x 14" (356 mm) D x 4-1/2" (114 mm) H	Silver Mist
CROIBSL14MB1	Elite Rotating Ironing Board	18-11/16" (475 mm) W x 14" (356 mm) D x 4-1/2" (114 mm) H	Matte Black
CSWIBSL14SM1	Deluxe Swivel Ironing Board	5-1/4" (133 mm) W x 13" (330 mm) D x 53-1/8" (1350 mm) H	Silver Mist
CPUIBSL14SM1	Premier Pop-Up Ironing Board	6-5/16" (160 mm) W x 13-1/2" (342 mm) D x 43-5/16" (1100 mm) H	Silver Mist

Iron Holder

PRODUCT	DESCRIPTION	DIMS	FINISH
IRHSM1	Static Door/Wall Mount Iron Holder	5-25/32" (147 mm) W x 5-1/4" (133 mm) D x 10-1/2" (266 mm) H	Silver Mist



Tilt-Out Hampers

- Available in black 18", 24" and 30" W cloth hamper or steel 18" and 24" W
- Unique, slanted rim design for clearance with tilt-down hamper cabinet doors
- Heavy gauge 2.8 mm and 5.8 mm steel wire construction
- Flap stay and door mounting bracket hardware included
- Door hinges (sold separately)



Tilt-Out Hampers

PRODUCT	DESCRIPTION	DIMS	FINISH
CTOHSL181	Cloth Tilt-Out Hamper for 18" Closet	15-2/9" (387 mm) W x 13-3/8" (340 mm) D x 19-1/2" (495 mm) H	Black
CTOHSL241	Cloth Tilt-Out Hamper for 24" Closet	21-2/9" (539 mm) W x 13-3/8" (340 mm) D x 19-1/2" (495 mm) H	Black
CTOHSL301	Cloth Tilt-Out Hamper for 30" Closet	27-2/9" (691 mm) W x 13-3/8" (340 mm) D x 19-1/2" (495 mm) H	Black
CTOHBSL161419CR	Tilt-Out Hamper for 18" Closet	16" (406 mm) W x 13-1/2" (343 mm) D x 22" (559 mm) H	Chrome
CTOHBSL161419SN	Tilt-Out Hamper for 18" Closet	16" (406 mm) W x 13-1/2" (343 mm) D x 22" (559 mm) H	Satin Nickel
CTOHBSL161419MB	Tilt-Out Hamper for 18" Closet	16" (406 mm) W x 13-1/2" (343 mm) D x 22" (559 mm) H	Matte Black
CTOHBSL211419CR	Tilt-Out Hamper for 24" Closet	21" (533 mm) W x 13-1/2" (343 mm) D x 22" (559 mm) H	Chrome
CTOHBSL211419SN	Tilt-Out Hamper for 24" Closet	21" (533 mm) W x 13-1/2" (343 mm) D x 22" (559 mm) H	Satin Nickel
CTOHBSL211419MB	Tilt-Out Hamper for 24" Closet	21" (533 mm) W x 13-1/2" (343 mm) D x 22" (559 mm) H	Matte Black

Accessories

CTOHBSLFS1*	Replacement flap stay door mounting bracket	5/8" (16 mm) W x 2" (51 mm) D x 11-2/3" (296 mm) H	Chrome
-------------	---	--	--------

Hamper Bag Liners

CTOHL161	Hamper Liner for CTOHBSL161419xx	15-1/2" (393 mm) W x 12-19/32" (320 mm) D x 21-27/32" (555 mm) H	Tan
CTOHL211	Hamper Liner for CTOHBSL211419xx	20-1/2" (521 mm) W x 12-19/32" (320 mm) D x 21-27/32" (555 mm) H	Tan

* Can be used with CTOHB Series Tilt-Out Hamper

Tilt-Out Hampers

- Available in (2) sizes and in chrome
- Simple one-step "slide-in/slide-out" basket removal
- Heavy duty wire construction
- Basket door attachment brackets
- Canvas liner(s) available (sold separately)
- Flap stay sold separately - CTOHBSLFS1
- (2) models to fit 18" and 24" section widths



Tilt-Out Hampers

PRODUCT	DESCRIPTION	DIMS	FINISH
CTOHB161319CR52	Steel Tilt-Out Hamper for 18" Closet	15-1/2" (394 mm) W x 13-1/2" (343 mm) D x 19-3/4" (502 mm) H	Chrome
CTOHB211319CR52	Steel Tilt-Out Hamper for 24" Closet	20-1/2" (521 mm) W x 13-1/2" (343 mm) D x 19-3/4" (502 mm) H	Chrome

Accessories

CTOHT1611	Tan Cloth Insert for CTOHB-16 Hamper	14-1/2" (368 mm) W x 12-3/16" (309 mm) D x 19-1/32" (484 mm) H	Tan
CTOHT2111	Tan Cloth Insert for CTOHB-21 Hamper	19-1/2" (495 mm) W x 12-3/16" (309 mm) D x 19-1/32" (484 mm) H	Tan

Slide-Out Hampers

- (3) models to fit 18", 24", and 30" section widths
- Available in black
- Full-extension, 75 lb. rated, ball-bearing steel slides
- Mounts to cabinet sides
- Installs easily in 32 mm applications

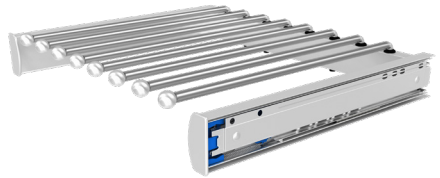


Slide-Out Hampers

PRODUCT	DESCRIPTION	DIMS	FINISH
CSOHS181	Slide-Out Hamper for 18" Closet	18" (457 mm) W x 14" (356 mm) D x 20-7/8" (530 mm) H	Black
CSOHS241	Slide-Out Hamper for 24" Closet	24" (610 mm) W x 14" (356 mm) D x 20-7/8" (530 mm) H	Black
CSOHS301	Slide-Out Hamper for 30" Closet	30" (762 mm) W x 14" (356 mm) D x 20-7/8" (530 mm) H	Black



Soft-Close Pant Rack Pullout



PSCSL1814SCCR1

- (3) models to fit 18", 24" and 30" section widths, all 14" + deep
- Non-slip storage hanger arms on each rack
- Full-extension, soft-closing, ball-bearing steel slides
- Available in satin nickel, chrome or matte black
- Steel construction, cast aluminum slide housing
- Installs with (4) screws, a fully-assembled unit

Soft Close Pant Rack Pullout

PRODUCT	DESCRIPTION	DIMS	FINISH
PSCSL1814SCSN1	18" W Pant Rack Pullout	18" (457 mm) W x 14" (357 mm) D x 2-1/2" (64 mm) H	Satin Nickel
PSCSL1814SCCR1	18" W Pant Rack Pullout	18" (457 mm) W x 14" (357 mm) D x 2-1/2" (64 mm) H	Chrome
PSCSL1814SCMB1	18" W Pant Rack Pullout	18" (457 mm) W x 14" (357 mm) D x 2-1/2" (64 mm) H	Matte Black
PSCSL2414SCSN1	24" W Pant Rack Pullout	24" (610 mm) W x 14" (357 mm) D x 2-1/2" (64 mm) H	Satin Nickel
PSCSL2414SCCR1	24" W Pant Rack Pullout	24" (610 mm) W x 14" (357 mm) D x 2-1/2" (64 mm) H	Chrome
PSCSL2414SCMB1	24" W Pant Rack Pullout	24" (610 mm) W x 14" (357 mm) D x 2-1/2" (64 mm) H	Matte Black
PSCSL3014SCSN1	30" W Pant Rack Pullout	30" (762 mm) W x 14" (357 mm) D x 2-1/2" (64 mm) H	Satin Nickel
PSCSL3014SCCR1	30" W Pant Rack Pullout	30" (762 mm) W x 14" (357 mm) D x 2-1/2" (64 mm) H	Chrome
PSCSL3014SCMB1	30" W Pant Rack Pullout	30" (762 mm) W x 14" (357 mm) D x 2-1/2" (64 mm) H	Matte Black



Pant Rack Pullout

- Designed for Custom Closets with an opening width of 17-1/2" to 30-1/2"
- 3-Piece zinc plated full-extension ball-bearing slide system
- Works in a 14" or deeper closet system
- Heavy gauge chrome frame
- (9), (13), or (16) non-slip chrome rods
- Distinctive moveable fingers for easy access



PSC2414CR

Pant Rack Pullout

PRODUCT	DESCRIPTION	DIMS	FINISH
PSC1814CR	18" W Pant Rack Pullout	17-1/2" (445 mm) W x 14" (356 mm) D x 3" (76 mm) H	Chrome
PSC2414CR	24" W Pant Rack Pullout	23-3/4" (603 mm) W x 14" (356 mm) D x 3" (76 mm) H	Chrome
PSC3014CR	30" W Pant Rack Pullout	29-3/4" (756 mm) W x 14" (356 mm) D x 3" (76 mm) H	Chrome

Closet Baskets

- Installs easily in 32 mm applications
- Easy to remove baskets
- Bayonet mounting system
- Available in chrome
- Baskets rest on top of the full-extension slides, eliminating torque twist
- Closet hamper bag insert sold separately. Designed to fit CB series only.



CB181411CR3



CLOTH HAMPER (CHBI SERIES)
FOR CB SERIES BASKETS

Closet-Basket

PRODUCT	DESCRIPTION	DIMS	FINISH
CB181207CR3	18" W Closet Basket	18" (457 mm) W x 12" (305 mm) D x 7" (178 mm) H	Chrome
CB181211CR3	18" W Closet Basket	18" (457 mm) W x 12" (305 mm) D x 11" (279 mm) H	Chrome
CB181407CR3	18" W Closet Basket	18" (457 mm) W x 14" (356 mm) D x 7" (178 mm) H	Chrome
CB181411CR3	18" W Closet Basket	18" (457 mm) W x 14" (356 mm) D x 11" (279 mm) H	Chrome
CB181418CR3	18" W Closet Basket	18" (457 mm) W x 14" (356 mm) D x 18" (457 mm) H	Chrome
CB181607CR3	18" W Closet Basket	18" (457 mm) W x 16" (406 mm) D x 7" (178 mm) H	Chrome
CB181611CR3	18" W Closet Basket	18" (457 mm) W x 16" (406 mm) D x 11" (279 mm) H	Chrome
CB181618CR3	18" W Closet Basket	18" (457 mm) W x 16" (406 mm) D x 18" (457 mm) H	Chrome
CB182007CR3	18" W Closet Basket	18" (457 mm) W x 20" (508 mm) D x 7" (178 mm) H	Chrome
CB182011CR3	18" W Closet Basket	18" (457 mm) W x 20" (508 mm) D x 11" (279 mm) H	Chrome
CB182018CR3	18" W Closet Basket	18" (457 mm) W x 20" (508 mm) D x 18" (457 mm) H	Chrome
CB241207CR3	24" W Closet Basket	24" (610 mm) W x 12" (305 mm) D x 7" (178 mm) H	Chrome
CB241211CR3	24" W Closet Basket	24" (610 mm) W x 12" (305 mm) D x 11" (279 mm) H	Chrome
CB241407CR3	24" W Closet Basket	24" (610 mm) W x 14" (356 mm) D x 7" (178 mm) H	Chrome
CB241411CR3	24" W Closet Basket	24" (610 mm) W x 14" (356 mm) D x 11" (279 mm) H	Chrome
CB241418CR3	24" W Closet Basket	24" (610 mm) W x 14" (356 mm) D x 18" (457 mm) H	Chrome
CB241607CR3	24" W Closet Basket	24" (610 mm) W x 16" (406 mm) D x 7" (178 mm) H	Chrome
CB241611CR3	24" W Closet Basket	24" (610 mm) W x 16" (406 mm) D x 11" (279 mm) H	Chrome
CB241618CR3	24" W Closet Basket	24" (610 mm) W x 16" (406 mm) D x 18" (457 mm) H	Chrome
CB242007CR3	24" W Closet Basket	24" (610 mm) W x 20" (508 mm) D x 7" (178 mm) H	Chrome
CB242011CR3	24" W Closet Basket	24" (610 mm) W x 20" (508 mm) D x 11" (279 mm) H	Chrome
CB242018CR3	24" W Closet Basket	24" (610 mm) W x 20" (508 mm) D x 18" (457 mm) H	Chrome
CB301407CR3	30" W Closet Basket	30" (762 mm) W x 14" (356 mm) D x 7" (178 mm) H	Chrome
CB301411CR3	30" W Closet Basket	30" (762 mm) W x 14" (356 mm) D x 11" (279 mm) H	Chrome
CB301418CR3	30" W Closet Basket	30" (762 mm) W x 14" (356 mm) D x 18" (457 mm) H	Chrome
CB301607CR3	30" W Closet Basket	30" (762 mm) W x 16" (406 mm) D x 7" (178 mm) H	Chrome
CB301611CR3	30" W Closet Basket	30" (762 mm) W x 16" (406 mm) D x 11" (279 mm) H	Chrome
CB301618CR3	30" W Closet Basket	30" (762 mm) W x 16" (406 mm) D x 18" (457 mm) H	Chrome

Closet Hamper Bag Insert

PRODUCT	DESCRIPTION	DIMS	FINISH
CHBI2414183	24" W Closet Hamper Bag Insert	21-1/2" (546 mm) W x 13-29/32" (353 mm) D x 14-1/2" (368 mm) H	Black
CHBI2416183	24" W Closet Hamper Bag Insert	21-1/2" (546 mm) W x 15-7/8" (403 mm) D x 14-1/2" (368 mm) H	Black
CHBI2420183	24" W Closet Hamper Bag Insert	21-1/2" (546 mm) W x 19-29/32" (506 mm) D x 14-1/2" (368 mm) H	Black
CHBI3014183	30" W Closet Hamper Bag Insert	27-3/8" (695 mm) W x 13-29/32" (353 mm) D x 14-1/2" (368 mm) H	Black
CHBI3016183	30" W Closet Hamper Bag Insert	27-3/8" (695 mm) W x 15-7/8" (403 mm) D x 14-1/2" (368 mm) H	Black

Closet Baskets

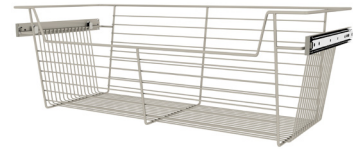
- Available in (3) heights 5", 10", or 17" and (3) widths 18", 24", or 30"
- Easy to remove baskets rest securely on hooks
- Available in matte black and satin nickel
- Full-extension, ball-bearing slides (included)
- Canvas bag liner sold separately. Liner designed to fit CBSL series only.



CBSL-181410SN-3



CBSL-241405MB-3



CBSL-301410SN-3

Closet-Basket

PRODUCT	DESCRIPTION	DIMS	FINISH
CBSL-181405MB-3*	18" W Closet Basket	18" (457 mm) W x 13" (330 mm) D x 5-1/3" (135 mm) H	Matte Black
CBSL-181405SN-3*	18" W Closet Basket	18" (457 mm) W x 13" (330 mm) D x 5-1/3" (135 mm) H	Satin Nickel
CBSL-181410MB-3*	18" W Closet Basket	18" (457 mm) W x 13" (330 mm) D x 10-4/9" (265 mm) H	Matte Black
CBSL-181410SN-3*	18" W Closet Basket	18" (457 mm) W x 13" (330 mm) D x 10-4/9" (265 mm) H	Satin Nickel
CBSL-181417SN-3*	18" W Closet Basket	18" (457 mm) W x 12-3/5" (320 mm) D x 17" (432 mm) H	Satin Nickel
CBSL-241405MB-3*	24" W Closet Basket	24" (610 mm) W x 13" (330 mm) D x 5-1/3" (135 mm) H	Matte Black
CBSL-241405SN-3*	24" W Closet Basket	24" (610 mm) W x 13" (330 mm) D x 5-1/3" (135 mm) H	Satin Nickel
CBSL-241410MB-3*	24" W Closet Basket	24" (610 mm) W x 13" (330 mm) D x 10-4/9" (265 mm) H	Matte Black
CBSL-241410SN-3*	24" W Closet Basket	24" (610 mm) W x 13" (330 mm) D x 10-4/9" (265 mm) H	Satin Nickel
CBSL-241417SN-3*	24" W Closet Basket	24" (610 mm) W x 12-3/5" (320 mm) D x 17" (432 mm) H	Satin Nickel
CBSL-301405MB-3*	30" W Closet Basket	30" (762 mm) W x 13" (330 mm) D x 5-1/3" (135 mm) H	Matte Black
CBSL-301405SN-3*	30" W Closet Basket	30" (762 mm) W x 13" (330 mm) D x 5-1/3" (135 mm) H	Satin Nickel
CBSL-301410MB-3*	30" W Closet Basket	30" (762 mm) W x 13" (330 mm) D x 10-4/9" (265 mm) H	Matte Black
CBSL-301410SN-3*	30" W Closet Basket	30" (762 mm) W x 13" (330 mm) D x 10-4/9" (265 mm) H	Satin Nickel
CBSL-301417SN-3*	30" W Closet Basket	30" (762 mm) W x 12-3/5" (320 mm) D x 17" (432 mm) H	Satin Nickel

Canvas Bag Liners

PRODUCT	DESCRIPTION	DIMS	FINISH
CBLSL-181405-T-1*	18" W Canvas Bag Liner	17-5/32" (436 mm) W x 12-11/32" (314 mm) D x 5" (127 mm) H	Tan
CBLSL-181410-T-1*	18" W Canvas Bag Liner	17-5/32" (436 mm) W x 12-11/32" (314 mm) D x 10" (254 mm) H	Tan
CBLSL-181417-T-1*	18" W Canvas Bag Liner	17-5/32" (436 mm) W x 12" (305 mm) D x 16-9/16" (421 mm) H	Tan
CBLSL-241405-T-1*	24" W Canvas Bag Liner	23-3/16" (589 mm) W x 12-11/32" (314 mm) D x 5" (127 mm) H	Tan
CBLSL-241410-T-1*	24" W Canvas Bag Liner	23-3/16" (589 mm) W x 12-11/32" (314 mm) D x 10" (254 mm) H	Tan
CBLSL-241417-T-1*	24" W Canvas Bag Liner	23-3/16" (589 mm) W x 12" (305 mm) D x 16-9/16" (421 mm) H	Tan
CBLSL-301405-T-1*	30" W Canvas Bag Liner	29-5/32" (741 mm) W x 12-11/32" (314 mm) D x 5" (127 mm) H	Tan
CBLSL-301410-T-1*	30" W Canvas Bag Liner	29-5/32" (741 mm) W x 12-11/32" (314 mm) D x 10" (254 mm) H	Tan
CBLSL-301417-T-1*	30" W Canvas Bag Liner	29-5/32" (741 mm) W x 12" (305 mm) D x 16-9/16" (421 mm) H	Tan

*Special Order Only



Closet Mirrors

- (2) design configurations
 - Premier
 - 3-Way foldable
- Premier mirror is available in (2) heights, 24" and 48"
- 3-Way foldable mirror has (3) panels that open up to 26" W and is 48" H
- Pulls out smoothly and swivels 90°
- Allow 5-3/4" for swiveling clearance
- Soft-close retracting mechanism, requires only a gentle push
- Fits any partition at least 14" deep and 8" wide
- Can be installed behind cabinet doors
- Universal, non-handed



CMSL1448SM1



CMTWSL1448SM1

Soft-Close Closet Mirrors w/ Over Travel

PRODUCT	DESCRIPTION	DIMS	FINISH
CMSL1448SM1	48" Closet Mirror	2" (51mm) W x 13" (330 mm) D x 48" (1219 mm) H	Silver Mist
CMSL1424SM1	24" Closet Mirror	2" (51mm) W x 13" (330 mm) D x 24" (610 mm) H	Silver Mist
3-Way Soft-Close Closet Mirror w/ Over Travel			
CMTWSL1448SM1	48" 3-Way Closet Mirror	3-3/16" (81mm) W x 13-13/32" (341 mm) D x 48" (1219 mm) H	Silver Mist

Premier Swivel Belt Rack

- Fits panel depths of 14", or greater
- Holds up to (7) belts
- Over-extension, ball-bearing, steel slide with pivoting roller hinge
- Locks in place after pivoting
- Cast aluminum slide housing
- Available in chrome, satin nickel, or matte black
- Reversible (Left or Right mount)



Premiere Swivel Belt Rack

PRODUCT	DESCRIPTION	DIMS	FINISH
CSWBRSL14CR1	14" Premier Swivel Belt Rack	2-15/32" (63 mm) W x 13-11/16" (348 mm) D x 2-1/4" (57 mm) H	Chrome
CSWBRSL14SN1	14" Premier Swivel Belt Rack	2-15/32" (63 mm) W x 13-11/16" (348 mm) D x 2-1/4" (57 mm) H	Satin Nickel
CSWBRSL14MB1	14" Premier Swivel Belt Rack	2-15/32" (63 mm) W x 13-11/16" (348 mm) D x 2-1/4" (57 mm) H	Matte Black

Premier Swivel Tie Rack

- Fits panel depths of 14", or greater
- Holds up to (16) ties
- Over-extension, ball-bearing, steel slide with pivoting roller hinge
- Locks in place after pivoting
- Cast aluminum slide housing
- Non-slip soft PVC coated pegs
- Available in chrome, satin nickel, or matte black
- Reversible (Left or Right mount)



Premiere Swivel Tie Rack

PRODUCT	DESCRIPTION	DIMS	FINISH
CSWTRSL14CR1	14" Premier Swivel Tie Rack	2-9/16" (65 mm) W x 13-11/16" (348 mm) D x 2" (51 mm) H	Chrome
CSWTRSL14SN1	14" Premier Swivel Tie Rack	2-9/16" (65 mm) W x 13-11/16" (348 mm) D x 2" (51 mm) H	Satin Nickel
CSWTRSL14MB1	14" Premier Swivel Tie Rack	2-9/16" (65 mm) W x 13-11/16" (348 mm) D x 2" (51 mm) H	Matte Black

Deluxe Slide Belt Rack

- Fits panel depths of 14", or greater
- Holds up to (7) belts
- Full-extension, ball-bearing, steel slide with steel rack housing
- Available in chrome, satin nickel, or matte black
- Coordinates with Sidelines By Rev-A-Shelf® Deluxe Tie and Scarf Racks
- Reversible (Left or Right mount)



Deluxe Slide Belt Rack

PRODUCT	DESCRIPTION	DIMS	FINISH
CBRSL14CR1	14" Deluxe Slide Belt Rack	2-3/16" (56 mm) W x 13-25/32" (349 mm) D x 3-7/16" (87 mm) H	Chrome
CBRSL14SN1	14" Deluxe Slide Belt Rack	2-3/16" (56 mm) W x 13-25/32" (349 mm) D x 3-7/16" (87 mm) H	Satin Nickel
CBRSL14MB1	14" Deluxe Slide Belt Rack	2-3/16" (56 mm) W x 13-25/32" (349 mm) D x 3-7/16" (87 mm) H	Matte Black

Deluxe Slide Tie Rack

- Fits panel depths of 14", or greater
- Non-slip soft PVC coated pegs
- Holds up to (16) ties
- Full-extension, ball-bearing, steel slide with steel rack housing
- Available in chrome, satin nickel, or matte black
- Coordinates with Sidelines By Rev-A-Shelf® Deluxe Belt and Scarf Racks
- Reversible (Left or Right mount)



Deluxe Slide Tie Rack

PRODUCT	DESCRIPTION	DIMS	FINISH
CTRSL14CR1	14" Deluxe Slide Tie Rack	2-5/16" (59 mm) W x 13-25/32" (349 mm) D x 3-3/32" (79 mm) H	Chrome
CTRSL14SN1	14" Deluxe Slide Tie Rack	2-5/16" (59 mm) W x 13-25/32" (349 mm) D x 3-3/32" (79 mm) H	Satin Nickel
CTRSL14MB1	14" Deluxe Slide Tie Rack	2-5/16" (59 mm) W x 13-25/32" (349 mm) D x 3-3/32" (79 mm) H	Matte Black

Side Mount Belt Rack

- Available in 12" and 14" depths
- Holds up to (9) belts
- Full extension, ball-bearing slide or static mounts
- Reversible (left or right mount)



BRC14CR



BRC14MB



Side Mount Belt Rack

PRODUCT	DESCRIPTION	DIMS	FINISH
BRC12CR	12" Sliding Belt Rack	2-2/7" (58 mm) W x 12" (304 mm) D x 2-1/3" (59 mm) H	Chrome
BRC12NSCR	12" Static Belt Rack	2-1/8" (54 mm) W x 11-7/9" (299 mm) D x 1-4/5" (46 mm) H	Chrome
BRC14CR	14" Sliding Belt Rack	2-2/7" (58 mm) W x 14" (356 mm) D x 2-1/3" (59 mm) H	Chrome
BRC12MB	12" Sliding Belt Rack	2-2/7" (58 mm) W x 12" (304 mm) D x 2-1/3" (59 mm) H	Matte Black
BRC14MB	14" Sliding Belt Rack	2-2/7" (58 mm) W x 14" (356 mm) D x 2-1/3" (59 mm) H	Matte Black

Side Mount Tie Racks

- Available in 12" and 14" depths
- Holds up to (25) ties
- Full extension, ball-bearing slide or static mounts
- Reversible (left or right mount)



TRC14CR



TRC14MB



Side Mount Tie Rack

PRODUCT	DESCRIPTION	DIMS	FINISH
TRC12CR	12" Sliding Tie Rack	2-1/2" (64 mm) W x 12" (305 mm) D x 1-29/32" (48 mm) H	Chrome
TRC12NSCR	12" Static Tie Rack	2" (51 mm) W x 11-7/9" (299 mm) D x 1-4/5" (46 mm) H	Chrome
TRC14CR	14" Sliding Tie Rack	2-1/2" (64 mm) W x 14" (356 mm) D x 1-29/32" (48 mm) H	Chrome
TRC12MB	12" Sliding Tie Rack	2-1/2" (64 mm) W x 12" (305 mm) D x 1-29/32" (48 mm) H	Matte Black
TRC14MB	14" Sliding Tie Rack	2-1/2" (64 mm) W x 14" (356 mm) D x 1-29/32" (48 mm) H	Matte Black

Wall Mount Belt Rack

- Fits panel depths of 14", or greater
- Holds up to (7) belts
- Reversible (Left or Right mount)
- Easy installation with (2) screws (included)



Wall Mount Belt Rack

PRODUCT	DESCRIPTION	DIMS	FINISH
BRCSL14NSCR1	14" Wall Mount Tie Rack	1-15/32" (37 mm) W x 13-1/2" (343 mm) D x 1-9/16" (40 mm) H	Chrome

Wall Mount Tie Rack

- Fits panel depths of 14", or greater
- Holds up to (16) Ties
- Reversible (Left or Right mount)
- Non-slip soft PVC coated pegs
- Easy installation with (2) screws (included)



Wall Mount Tie Rack

PRODUCT	DESCRIPTION	DIMS	FINISH
TRCSL14NSCR1	14" Wall Mount Tie Rack	1-5/8" (41 mm) W x 13-1/2" (343 mm) D x 2" (51 mm) H	Chrome

Deluxe Slide Scarf Rack

- Fits panel depths of 14" or greater
- Steel construction, (7) loops
- Full-extension, ball-bearing slide
- Coordinates with Sidelines by Rev-A-Shelf® Deluxe Belt and Tie Racks
- Reversible (Left or Right mount)



Deluxe Slide Scarf Rack

PRODUCT	DESCRIPTION	DIMS	FINISH
CSFRSL14CR1	14" Deluxe Slide Scarf Rack	1-25/32" (45 mm) W x 13-25/32" (349 mm) D x 4-1/8" (105 mm) H	Chrome

Closet Shoe Rail

- Easy Installation
- Heavy gauge wire
- Available in 17", 23", 29", and 35" lengths



Closet Shoe Rail

PRODUCT	DESCRIPTION	DIMS	FINISH
CSR17CR10	17" W Closet Shoe Rail (10 Pack)	17" (432 mm) W x 4/9" (11 mm) D x 2-2/5" (61 mm) H	Chrome
CSR23CR10	23" W Closet Shoe Rail (10 Pack)	23" (584 mm) W x 1/2" (13 mm) D x 2" (51 mm) H	Chrome
CSR29CR10	29" W Closet Shoe Rail (10 Pack)	29" (737 mm) W x 1/2" (13 mm) D x 2" (51 mm) H	Chrome
CSR35CR10	35" W Closet Shoe Rail (10 Pack)	35" (889 mm) W x 1/2" (13 mm) D x 2" (51 mm) H	Chrome

Closet Shoe Rail

- Easy installation
- Available in matte black or satin nickel
- Available in 17", 23", 29", and 35" lengths
- Allows for 1/2" clearance on each side
- Configured for shelf slide applications



Closet Shoe Rail

PRODUCT	DESCRIPTION	DIMS	FINISH
CSRSL18MB10	17" W Closet Shoe Rail (10 Pack)	17" (432 mm) W x 15/32" (12 mm) D x 2" (51 mm) H	Matte Black
CSRSL18SN10	17" W Closet Shoe Rail (10 Pack)	17" (432 mm) W x 15/32" (12 mm) D x 2" (51 mm) H	Satin Nickel
CSRSL24MB10	23" W Closet Shoe Rail (10 Pack)	23" (584 mm) W x 15/32" (12 mm) D x 2" (51 mm) H	Matte Black
CSRSL24SN10	23" W Closet Shoe Rail (10 Pack)	23" (584 mm) W x 15/32" (12 mm) D x 2" (51 mm) H	Satin Nickel
CSRSL30MB10	29" W Closet Shoe Rail (10 Pack)	29" (737 mm) W x 15/32" (12 mm) D x 2" (51 mm) H	Matte Black
CSRSL30SN10	29" W Closet Shoe Rail (10 Pack)	29" (737 mm) W x 15/32" (12 mm) D x 2" (51 mm) H	Satin Nickel
CSRSL36MB10	35" W Closet Shoe Rail (10 Pack)	35" (889 mm) W x 15/32" (12 mm) D x 2" (51 mm) H	Matte Black
CSRSL36SN10	35" W Closet Shoe Rail (10 Pack)	35" (889 mm) W x 15/32" (12 mm) D x 2" (51 mm) H	Satin Nickel

Closet Rods

- Cast aluminum with integrated plastic pole guard
- Available in matte black, chrome or satin nickel
- Matching pole caps (sold separately)



CRCSLMB1



CRCSLSN1



CRCSLCR1



Closet Rod

PRODUCT	DESCRIPTION	DIMS	FINISH
CRSL96CR1	Closet Rod	96" (2438 mm) W x 1" (25 mm) D x 1-15/32" (37 mm) H	Chrome
CRSL96MB1	Closet Rod	96" (2438 mm) W x 1" (25 mm) D x 1-15/32" (37 mm) H	Matte Black
CRSL96SN1	Closet Rod	96" (2438 mm) W x 1" (25 mm) D x 1-15/32" (37 mm) H	Satin Nickel

(2) Closet Rod Caps

CRCSLCR1	Closet Rod Caps	3/4" (19 mm) W x 2" (51 mm) D x 2" (51 mm) H	Chrome
CRCSLMB1	Closet Rod Caps	3/4" (19 mm) W x 2" (51 mm) D x 2" (51 mm) H	Matte Black
CRCSLSN1	Closet Rod Caps	3/4" (19 mm) W x 2" (51 mm) D x 2" (51 mm) H	Satin Nickel

Pull Down Closet Rod

- (1) Adjustable Rod and mounting hardware
- Perfect for shorter people to access clothing
- Telescoping pull down rod adjustable from 34" to 50"
- Hanging rod width adjust from 21.5" to 48"
- Heavy-duty metal frame
- Holds up to 25 lbs.



Telescoping Pull Down Closet Rod

PRODUCT	DESCRIPTION	DIMS	FINISH
CPDR1826	Adjustable Pull Down Closet Rod	21-1/2"-26" (546-660 mm) W x 4" (102 mm) D x 34-3/4"-49-3/4" (937-1264 mm) H	Chrome
CPDR2635	Adjustable Pull Down Closet Rod	26"-35" (660-889 mm) W x 4" (102 mm) D x 34-3/4"-49-3/4" (937-1264 mm) H	Chrome
CPDR3548	Adjustable Pull Down Closet Rod	35"-48" (889-1219 mm) W x 4" (102 mm) D x 34-3/4"-49-3/4" (937-1264w mm) H	Chrome

Adjustable Pull Down Closet Rod

- Custom rod and mounting hardware (mounts to side of a closet panel)
- Cut-to-size fits cabinet openings from 18" (457 mm) to 48" (1219 mm)
- Soft-open/soft-close assist
- Heavy-duty metal frame that holds up to 33 lbs.



Adjustable Pull Down Closet Rod

PRODUCT	DESCRIPTION	DIMS	FINISH
CPDRSL48MB	Adjustable Pull Down Closet Rod	18"-48" (457-1219 mm) W x 12-2/5" (315 mm) D x 35-4/9" (900 mm) H	Matte Black
CPDRSL48SC	Adjustable Pull Down Closet Rod	18"-48" (457-1219 mm) W x 12-2/5" (315 mm) D x 35-4/9" (900 mm) H	Satin Chrome

Telescoping Valet Rods

- Reversible (left or right mount), cast aluminum rack housing
- 10 mm diameter rod extends 9-1/2", fits panel depths of 14" or greater
- Holds up to 35 lbs.
- Available in chrome, satin nickel, or matte black
- Coordinates with Sidelines By Rev-A-Shelf® Tie, Belt Accessory Racks



Telescoping Valet Rod

PRODUCT	DESCRIPTION	DIMS	FINISH
CVLSL14CR1	14" Telescoping Valet Rod	29/32" (23 mm) W x 13-3/4" (349 mm) D x 1-9/16" (40 mm) H	Chrome
CVLSL14SN1	14" Telescoping Valet Rod	29/32" (23 mm) W x 13-3/4" (349 mm) D x 1-9/16" (40 mm) H	Satin Nickel
CVLSL14MB1	14" Telescoping Valet Rod	29/32" (23 mm) W x 13-3/4" (349 mm) D x 1-9/16" (40 mm) H	Matte Black

Adjustable Laundry Valet Rod

- Steel construction that holds up to 35 lbs.
- Mounting-screws provided
- Extends out to 11" from wall surface
- Available in chrome, satin nickel or matte black



Adjustable Laundry Valet Rod

PRODUCT	DESCRIPTION	DIMS	FINISH
CLVSLCR1	Laundry Valet Rod	2-15/16" (75 mm) W x 10-29/32" (277 mm) D x 2-15/16" (75 mm) H	Chrome
CLVLSLN1	Laundry Valet Rod	2-15/16" (75 mm) W x 10-29/32" (277 mm) D x 2-15/16" (75 mm) H	Satin Nickel
CLVSLMB1	Laundry Valet Rod	2-15/16" (75 mm) W x 10-29/32" (277 mm) D x 2-15/16" (75 mm) H	Matte Black

Pop-Out Valet Rod

- One-touch pop-out mechanism
- Cast aluminum rack housing
- Fits panel depths of 12" or greater
- 10 mm diameter rod extends 7-1/2"
- Holds up to 35 lbs.
- Available in chrome, matte black, or satin nickel
- Coordinates with Sidelines By Rev-A-Shelf® Tie, Belt Accessory Racks
- Reversible (Left or Right mount)



Pop-Out Valet Rod

PRODUCT	DESCRIPTION	DIMS	FINISH
CVLPOSL12CR1	12" Pop-Out Valet Rod	29/32" (23 mm) W x 11-25/32" (299 mm) D x 1-9/16" (40 mm) H	Chrome
CVLPOSL12MB1	12" Pop-Out Valet Rod	29/32" (23 mm) W x 11-25/32" (299 mm) D x 1-9/16" (40 mm) H	Matte Black
CVLPOSL14CR1	14" Pop-Out Valet Rod	29/32" (23 mm) W x 13-3/4" (349 mm) D x 1-9/16" (40 mm) H	Chrome
CVLPOSL14SN1	14" Pop-Out Valet Rod	29/32" (23 mm) W x 13-3/4" (349 mm) D x 1-9/16" (40 mm) H	Satin Nickel
CVLPOSL14MB1	14" Pop-Out Valet Rod	29/32" (23 mm) W x 13-3/4" (349 mm) D x 1-9/16" (40 mm) H	Matte Black

Deluxe Slide Valet Rod

- Full-extension, ball-bearing, steel slide with steel rack housing
- Fits panel depths of 14", or greater
- 10 mm diameter rod extends 8"
- Holds up to 35 lbs.
- Available in chrome, satin nickel, or matte black
- Coordinates with Sidelines By Rev-A-Shelf® Deluxe Tie, Belt Racks
- Reversible (Left or Right mount)



Deluxe Slide Valet Rod

PRODUCT	DESCRIPTION	DIMS	FINISH
CVRSL14CR1	14" Deluxe Slide Valet Rod	1-1/8" (29 mm) W x 13-7/9" (350 mm) D x 3-1/5" (81 mm) H	Chrome
CVRSL14SN1	14" Deluxe Slide Valet Rod	1-1/8" (29 mm) W x 13-7/9" (350 mm) D x 3-1/5" (81 mm) H	Satin Nickel
CVRSL14MB1	14" Deluxe Slide Valet Rod	1-1/8" (29 mm) W x 13-7/9" (350 mm) D x 3-1/5" (81 mm) H	Matte Black

Sliding Valet Rods

- Adjustable mounting brackets
- Installs easily with only (2) screws
- Unique removable pull
- 12" rod - pulls out 6 - 27/32"
- 14" rod - pulls out 8"



CVR12CR



CVR14MB



Sliding Valet Rod

PRODUCT	DESCRIPTION	DIMS	FINISH
CVR12CR	12" Sliding Valet Rod	1-1/8" (29 mm) W x 11-7/8" (302 mm) D x 1" (25 mm) H	Chrome
CVR14CR	14" Sliding Valet Rod	1-1/8" (29 mm) W x 13-7/8" (352 mm) D x 1" (25 mm) H	Chrome
CVR12MB	12" Sliding Valet Rod	1-1/8" (29 mm) W x 11-7/8" (302 mm) D x 1" (25 mm) H	Matte Black
CVR14MB	14" Sliding Valet Rod	1-1/8" (29 mm) W x 13-7/8" (352 mm) D x 1" (25 mm) H	Matte Black

Value Line Sliding Valet Rods

- Rod and mounting hardware included
- Removable knob can be replaced with your own custom knob
- Construction: Heavy gauge plated metal wire construction
- Simple (4) screw installation
- Rod pulls out 6"



CVL12CR



CVL12MB



Sliding Valet Rod

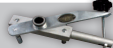
PRODUCT	DESCRIPTION	DIMS	FINISH
CVL12CR	12" Sliding Valet Rod	1" (25 mm) W x 11-29/32" (302 mm) D x 1-21/32" (41 mm) H	Chrome
CVL12MB	12" Sliding Valet Rod	1" (25 mm) W x 11-29/32" (302 mm) D x 1-21/32" (41 mm) H	Matte Black

Insert Valet Rod

- Ability to open or close the 3-3/4" rod with a single finger
- Removable pull hardware
- Designed to fit within 3/4" and larger closet panels
- Use the drill guide (sold separately) for a perfect fit and stability



Closet Valet Rod

PRODUCT	DESCRIPTION	DIMS	FINISH
CVRI7CR	Insert Valet Rod	5/8" (16 mm) W x 7-19/32" (447 mm) D x 5/8" (16 mm) H	Chrome
CVRIDG	Drill Guide w/ Bit	Designed to simplify drilling for the installation of this product, 1/2" drill bit included.	

Wine/Bottle Rack

- Available in (3) widths, 18", 24" or 30"
- Fits 14" + deep cabinetry
- Polished Chrome Finish
- Holds up to (7) bottles, 18" (4), 25" (6), and 30" (7)
- Installs easily in 32 mm applications
- Full-extension, ball-bearing slides (included)



Chrome Wine/Bottle Rack Pullout

PRODUCT	DESCRIPTION	DIMS	FINISH
5WBR18CR1	18" Wine/Bottle Rack	18" (457 mm) W X 14" (355 mm) D X 2-3/8" (60 mm) H	Chrome
5WBR24CR1	24" Wine/Bottle Rack	24" (610 mm) W X 14" (355 mm) D X 2-3/8" (60 mm) H	Chrome
5WBR30CR1	30" Wine/Bottle Rack	30" (762 mm) W X 14" (355 mm) D X 2-3/8" (60 mm) H	Chrome

Spice/Can Rack

- Available in (3) widths, 18", 24" or 30"
- Fits 14" + deep cabinetry
- Polished Chrome Finish
- Rack holds items right-reading, angled to face the chef
- Holds up to (26) spice containers, 18" (16) , 24" (22) and 30" (26)
- Holds up to (12) 10.75 oz cans, 18" (8), 24" (10), and 30" (12)
- Installs easily in 32 mm applications
- Full-extension, ball-bearing slides (included)



Chrome Spice/Can Rack Pullout

PRODUCT	DESCRIPTION	DIMS	FINISH
5WSCR18CR1	18" Spice/Can Rack	18" (457 mm) W X 14" (355 mm) D X 2-3/8" (60 mm) H	Chrome
5WSCR24CR1	24" Spice/Can Rack	24" (610 mm) W X 14" (355 mm) D X 2-3/8" (60 mm) H	Chrome
5WSCR30CR1	30" Spice/Can Rack	30" (762 mm) W X 14" (355 mm) D X 2-3/8" (60 mm) H	Chrome

Plastic Containers

- BPA-free acrylic container
- Easy open/close airtight locking lid
- Sold singularly or in a set that includes (1) 1.04 qt canister, (1) 1.55 qt canister, and (1) 2.07 qt canister



Plastic Container

PRODUCT	DESCRIPTION	DIMS	FINISH
CO03S1	3" Tall Acrylic Container and Matching Lid	3-31/32" (100 mm) W X 3-31/32" (100 mm) D X 3-27/32" (98 mm) H	Clear
CO05M1	5" Tall Acrylic Container and Matching Lid	3-31/32" (100 mm) W X 3-31/32" (100 mm) D X 2-3/8" (60 mm) H	Clear
CO07L1	7" Tall Acrylic Container and Matching Lid	30" (762 mm) W X 14" (355 mm) D X 5-13/16" (147 mm) H	Clear

Deluxe Pullout Pantry Organizer

- Perfect for dry goods
- Heavy gauge plated metal wire construction
- Polished Chrome Finish
- 3-Piece zinc plated full-extension ball-bearing slide system
- BPA-free acrylic containers



Pullout Pantry Organizer

PRODUCT	DESCRIPTION	DIMS	FINISH
5WCOR18CR1	18" Wire Chrome Container Rack	18" (457 mm) W X 14" (355 mm) D X 8-3/8" (212 mm) H	Chrome
5WCOR24CR1	24" Wire Chrome Container Rack	24" (610 mm) W X 14" (355 mm) D X 8-3/8" (212 mm) H	Chrome
5WCOR30CR1	30" Wire Chrome Container Rack	30" (762 mm) W X 14" (355 mm) D X 8-3/8" (212 mm) H	Chrome

Undermount Jewelry Drawers

- Use in coordination with the velvet ring and acrylic accessories
- Drawer is velvet lined to protect items
- Soft-close, undermount slides
- Each system is easily installed with system holes
- Drawer head mounting capability
- Sturdy wood construction

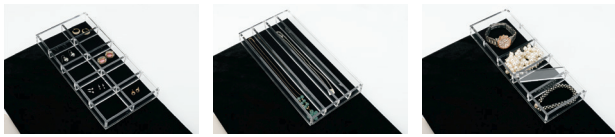


Undermount Jewelry Drawers

PRODUCT	DESCRIPTION	DIMS	FINISH
CVJD1814UM1	Jewelry Drawer System	18" (457 mm) W X 14" (356 mm) D X 3-1/8" (79 mm) H	Black
CVJD2414UM1	Jewelry Drawer System	24" (607 mm) W X 14" (356 mm) D X 3-1/8" (79 mm) H	Black
CVJD3014UM1	Jewelry Drawer System	30" (762 mm) W X 14" (356 mm) D X 3-1/8" (79 mm) H	Black

Jewelry Drawer Inserts

- Jewelry inserts
- Use with CVJD Series jewelry drawers
- Easy "drop-in" installation
- Soft velvet flocked covering



CALGORG1

CANECKLACE1

CASMORG1



Jewelry Drawer Components

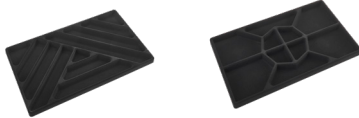
PRODUCT	DESCRIPTION	DIMS	FINISH
CALGORG1	Watch/Bracelet Organizer	11-5/8" (295 mm) W X 6" (152 mm) D X 1-1/4" (32 mm) H	Clear
CANECKLACE1	Necklace Organizer	11-5/8" (295 mm) W X 6" (152 mm) D X 1-1/4" (32 mm) H	Clear
CASMORG1	Ring Organizer	11-5/8" (295 mm) W X 4-1/4" (108 mm) D X 1-1/4" (32 mm) H	Clear

Accessories

CVRING1	Felt Lined Ring Holder	11-5/8" (295 mm) W x 4-1/4" (108 mm) D x 1-1/4" (32 mm) H	Black
---------	------------------------	---	-------

Jewelry Drawer Organizers

- Store jewelry without tangling
- Easy "drop-in" installation
- Curved inside radius allows for full accessibility
- Soft, velvet flocked covering



CJD24IN

CJD2415



Jewelry Drawer Organizer

PRODUCT	DESCRIPTION	DIMS	FINISH
CJD24IN	Jewelry Drawer Necklace Organizer	22" (559 mm) W X 13" (330 mm) D X 1-1/2" (38 mm) H	Black
CJD2415	Jewelry Drawer Standard Organizer	22" (559 mm) W X 13" (330 mm) D X 1-1/2" (38 mm) H	Black



Richelieu
richelieu.com

SLRAS24E